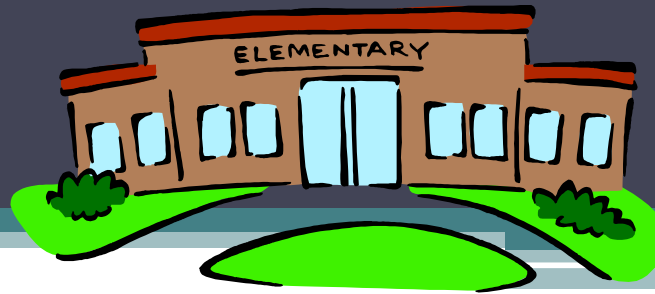


# It's Elementary! PIIC's Coaching Essentials for Coaches and Mentors



Diane Hubona, IU8 PIIC Mentor  
Brandy Sheneman, IU9 PIIC Mentor



**PENNSYLVANIA INSTITUTE FOR  
INSTRUCTIONAL COACHING**

*A partnership of the Annenberg Foundation and  
the Pennsylvania Department of Education*

# Who We Are

- Unity Builder...
- Name?
- Current Role?
- Rationale for Choice?

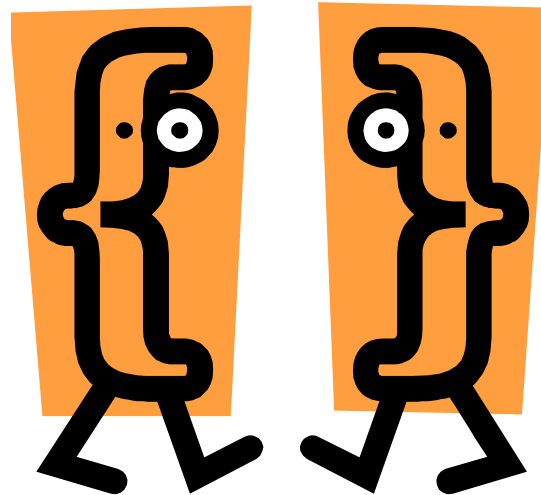


**PENNSYLVANIA INSTITUTE FOR  
INSTRUCTIONAL COACHING**

*A partnership of the Annenberg Foundation and  
the Pennsylvania Department of Education*

# Take a Seat!

- Please find a pair/share partner from the unity builder and sit with him/her.



**PENNSYLVANIA INSTITUTE FOR  
INSTRUCTIONAL COACHING**

*A partnership of the Annenberg Foundation and  
the Pennsylvania Department of Education*

# Coaching Word Splash: What We Do



Elementary BDA Coaching Cycle

What does it look like?

What does it sound like?

What does it feel like?



**PENNSYLVANIA INSTITUTE FOR  
INSTRUCTIONAL COACHING**

*A partnership of the Annenberg Foundation and  
the Pennsylvania Department of Education*

# Elementary vs. Secondary Coaching

Text Rendering



Very Important Points-- V.I.P.'s

Most Valuable Point-- M.V.P



**PENNSYLVANIA INSTITUTE FOR  
INSTRUCTIONAL COACHING**

*A partnership of the Annenberg Foundation and  
the Pennsylvania Department of Education*

# PIIC's Core Elements



PENNSYLVANIA INSTITUTE FOR  
INSTRUCTIONAL COACHING

A partnership of the Annenberg Foundation and  
the Pennsylvania Department of Education

One on one support

Evidence- based literacy practices and research-based instructional techniques

Reflective and non-evaluative practice

Collecting and analyzing data to identify student needs, assess changes in instructional practice, and measure student progress

# Mystery Box For Elementary Coaches & Mentors



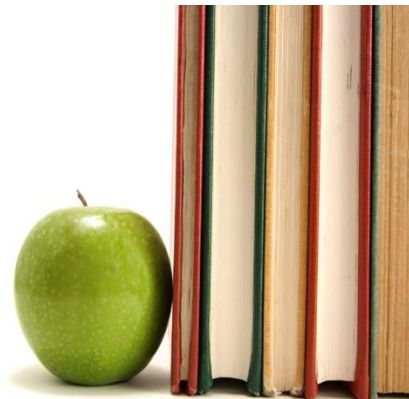
**PENNSYLVANIA INSTITUTE FOR  
INSTRUCTIONAL COACHING**

*A partnership of the Annenberg Foundation and  
the Pennsylvania Department of Education*

# Mystery Box



# Time, materials, and programs



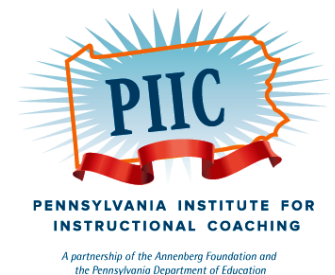
PENNSYLVANIA INSTITUTE FOR  
INSTRUCTIONAL COACHING

A partnership of the Annenberg Foundation and  
the Pennsylvania Department of Education



# Implications for PIIC Coaches and Mentors

- Time management—PLC's, book talks, study groups
- BDA coaching cycle fidelity
- Multiple areas of expertise
- Mentors' differentiated professional development vital for coaches



# Quotation Mingle : Impact of Coaching

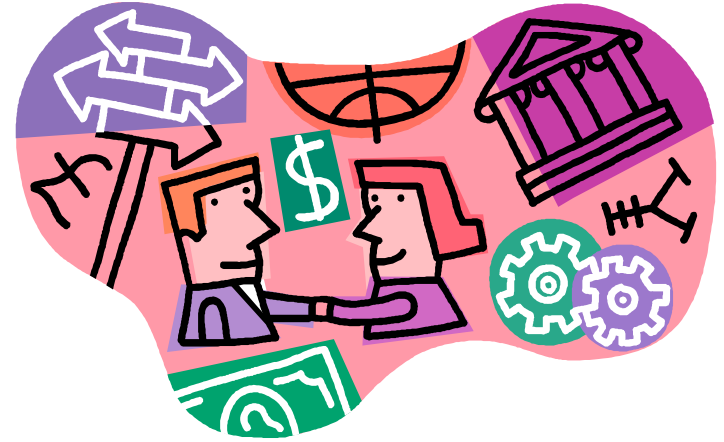


# Hand Up, Pair Up, Share Up

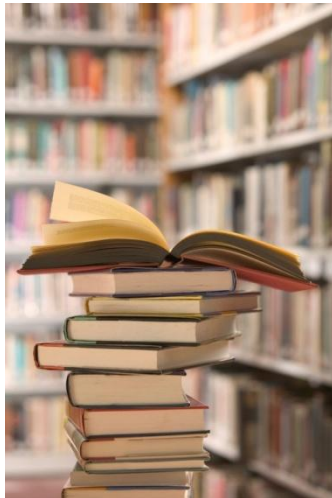


**PENNSYLVANIA INSTITUTE FOR  
INSTRUCTIONAL COACHING**

*A partnership of the Annenberg Foundation and  
the Pennsylvania Department of Education*



# Collaboration/Empowering Change/Researched Best Practices/Ongoing Support



# Ticket out the Door!



**PENNSYLVANIA INSTITUTE FOR  
INSTRUCTIONAL COACHING**

*A partnership of the Annenberg Foundation and  
the Pennsylvania Department of Education*